

CHARLES M.

SCHULZ

MUSEUM

**Gina Huntsinger**

Marketing Director

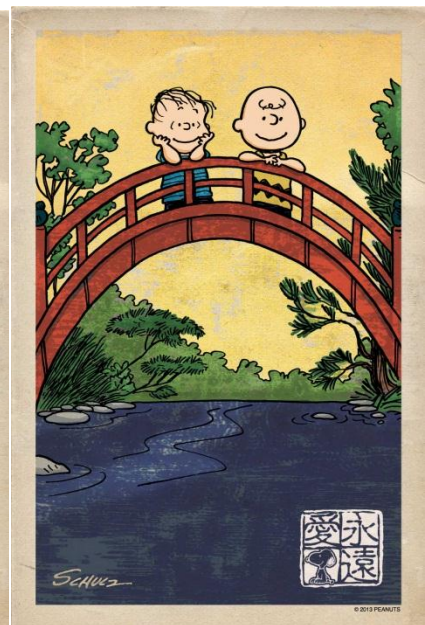
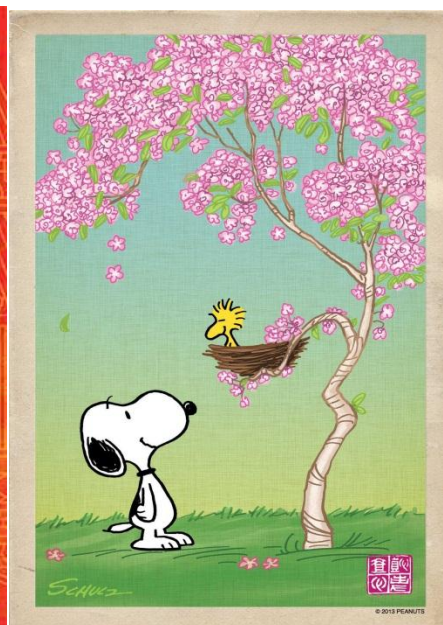
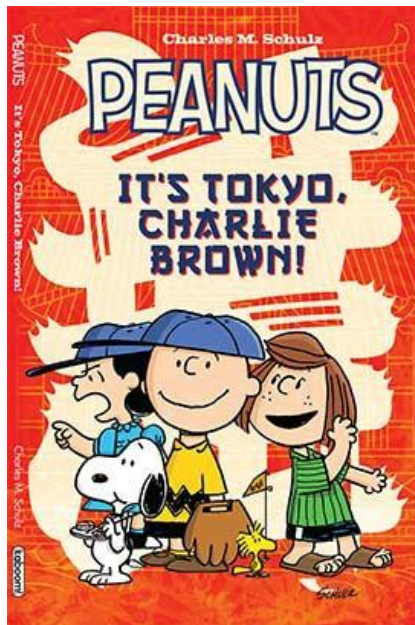
Charles M. Schulz Museum & Research Center

(707) 579-4452 ext. 268

gina@SchulzMuseum.org

FOR IMMEDIATE RELEASE: December 21, 2012

***It's Tokyo, Charlie Brown!* Release Event  
at the Charles M. Schulz Museum  
Saturday, January 19 at 1 pm**



Cover (left) and inside art (right and center) from *Peanuts'* new full length graphic novel, *It's Tokyo, Charlie Brown!*

(Santa Rosa, CA) Celebrate the release of the new graphic novel, *It's Tokyo, Charlie Brown!*, and the new *Peanuts* comic books on Saturday, January 19, at 1 pm at the Charles M. Schulz Museum and Research Center. Join the creators, **Vicki Scott, Paige Braddock, Alexis Fajardo, Shane Houghton, Justin Thompson, and Matt Whitlock**, and learn what's new for the *Peanuts* gang and try your *Peanuts* IQ with trivia and prizes.

**About *It's Tokyo, Charlie Brown!***

The *Peanuts* gang touches down in Tokyo! Charlie Brown and Snoopy lead the charge as the gang's team is selected to represent the United States in an international

baseball game in Japan. Charlie Brown can't believe his team was picked, but even with the addition of a sports star like Peppermint Patty, do they have any hope of winning? Between seeing the sights and taking in the best of Japanese culture, Snoopy, Charlie Brown, Peppermint Patty, and the rest of everyone's favorite characters still manage to be their incorrigible selves.

## **IMAGES**

If you would like any of the images from this press release to print in a publication, contact Gina Huntsinger at [gina@schulzmuseum.org](mailto:gina@schulzmuseum.org) or (707) 284-1268.

## **ABOUT THE CHARLES M. SCHULZ MUSEUM & RESEARCH CENTER**

The Charles M. Schulz Museum opened in August 2002 to fulfill its mission of preserving, displaying, and interpreting the art of Charles M. Schulz. The museum carries out this mission through changing exhibitions and programming that: build an understanding of cartoonists and cartoon art; illustrate the scope of Schulz's multi-faceted career; communicate the stories, inspirations and influences of Charles Schulz; and celebrate the life of Charles Schulz and the Peanuts characters.

## **LOCATION**

The Charles M. Schulz Museum is located 50 minutes north of San Francisco by car on Highway 101. The Museum is located at 2301 Hardies Lane, Santa Rosa, California, 95403.

## **HOURS**

Weekdays Monday thru Friday (except Tuesdays\*) 11am – 5pm

Saturday & Sunday 10am – 5pm

Closed Tuesdays\*

\*Open every day throughout the summer (Memorial Day through Labor Day)

## **ADMISSION FEES**

Free – Museum Members, Children 3 and under

\$5.00 – Children 4-18, college students with valid I.D. card, and Seniors 62+

\$10.00 – Adults

For more information consult the Museum web site: [www.SchulzMuseum.org](http://www.SchulzMuseum.org).

Charles M. Schulz Museum & Research Center

[www.facebook.com/schulzmuseum](http://www.facebook.com/schulzmuseum)

Follow us on Twitter: @schulzmuseum

###